

Portable

Canvio Ready

Ready to Store. Simple to Use.



4 2 1
TB TB TB

Color ●

2.5" 2.5" external hard drive


 SuperSpeed USB 3.2 Gen 1

 USB-powered


EMEA Region, Toshiba Storage Solutions –
Toshiba's Canvio Ready external hard drive uses
USB 3.2 Gen 1 technology for transfer speeds of
up to 5 Gbit/s – and with plug-and-play
technology, you're able to quickly save and
secure up to 4 TB of media to a compact,
portable device. The Canvio Ready includes ramp
load design that prevents damage to the disk
while mobile, and a shock sensor that will cut the
power to protect data in the event of physical
stress – so you can rest assured that your files are
safe.



Manual

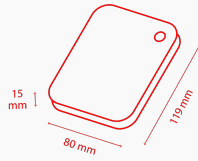
[Canvio-Ready_UM_221021.pdf](#) 

Tools

[ToshibaStorageDiagnosticTool_1.30.8920.zip](#) 



Product Specifications



Basic Specifications

Interface	USB 3.2 Gen 1 (USB 2.0 compatible)
Max. transfer rate	~ 5.0 Gbit/s
File system	NTFS (MS Windows) *The drive can be re-formatted to HFS+ file system for full Mac® compatibility.
Power	USB bus power (max. 900mA)

Box Content

Box Content	Canvio Ready USB 3.2 Gen 1 (Type-A to Micro-B) User's Manual (pre-installed on the hard drive)
--------------------	--

Physical

Weight (approx.)	2 TB, 1 TB: 149 g 4 TB: 217,5 g
Dimensions	2 TB, 1 TB: 78 x 109 x 14 mm 4 TB: 78 x 109 x 19,5 mm
Enclosure	two-tone matte and gloss finish

Product Range

Part number	Capacity	Color
HDTP340EK3CA	4 TB	Black
HDTP320EK3AA	2 TB	Black
HDTP310EK3AA	1 TB	Black

Logistical Information:

Box dimensions	111 x 38 x 141 mm
Box weight (gross)	2TB, 1 TB: 244 g 4 TB: 300 g
Master carton dimensions	123 x 205 x 165 mm
Master carton weight (gross)	2TB, 1 TB: 1.35kg 4 TB: 1.63 kg
Boxes per master carton	5
Pallet dimensions	1150 x 1150 x 130 mm
Pallet weight (net)	22 kg
Units per pallet	1350

Contact

Toshiba Electronics Europe GmbH

Hansaallee 181
40549 Düsseldorf
Germany